



Technical Document

Setting Up Mutes and Tallies For WheatNet-IP

Overview

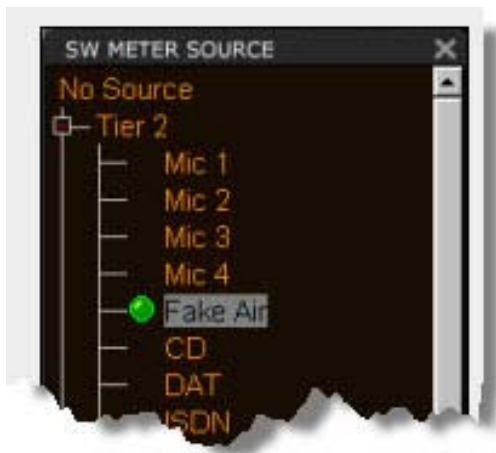
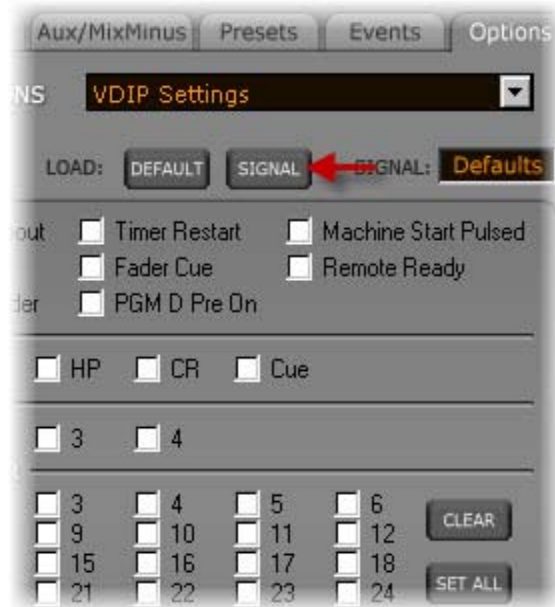
Let's take a look at what you need to do to setup a mute and tally for a studio's microphone signals in your WheatNet-IP system. This document will walk you through the process step by step.

Start by going to the E-Series control surface *Options* tab. This can be selected using the mouse or by simply pressing the Options button in the upper right section of the control surface's Master Panel (MNE-6). This button is only available on the E-6 Model control surface.

Once you are on the options screen select *VDIP Settings* from the drop down list of available options.

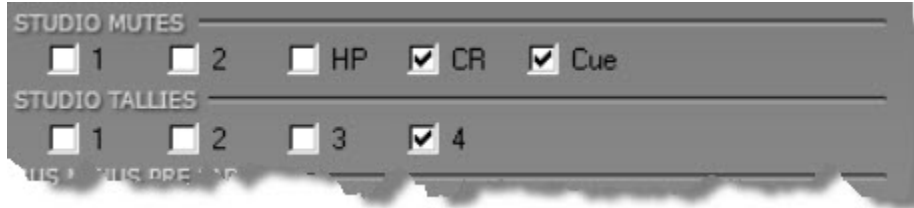


By default the surface uses these settings as a global surface configuration. Because we do not want all signals to activate muting and tallies we need to specify the settings on a per signal basis. Clicking the *SIGNAL* button lets us apply our settings to a specific signal, and also displays the signal tree of available signals in the system.



Next, double click on the microphone signal that you wish to configure for muting and tally. Because you are working on a per signal basis you may only select one signal at a time. You will need to repeat these steps for each microphone source signal. The signal tree is organized based on the location defined in the source signals.

Now we need to select the mutes and studio tallies to be used with this signal. There are five studio mutes and four tallies available for use. Mutes and tallies are defined in the charts below.

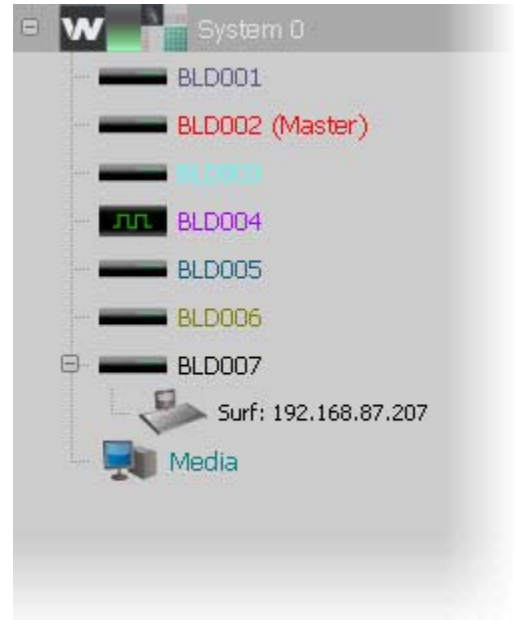


| Mute | Function |
|------|-------------------------------|
| 1 | Mutes the Studio 1 output |
| 2 | Mutes the Studio 2 output |
| HP | Mutes the Headphone output |
| CR | Mutes the Control Room output |
| Cue | Mutes the Cue output |

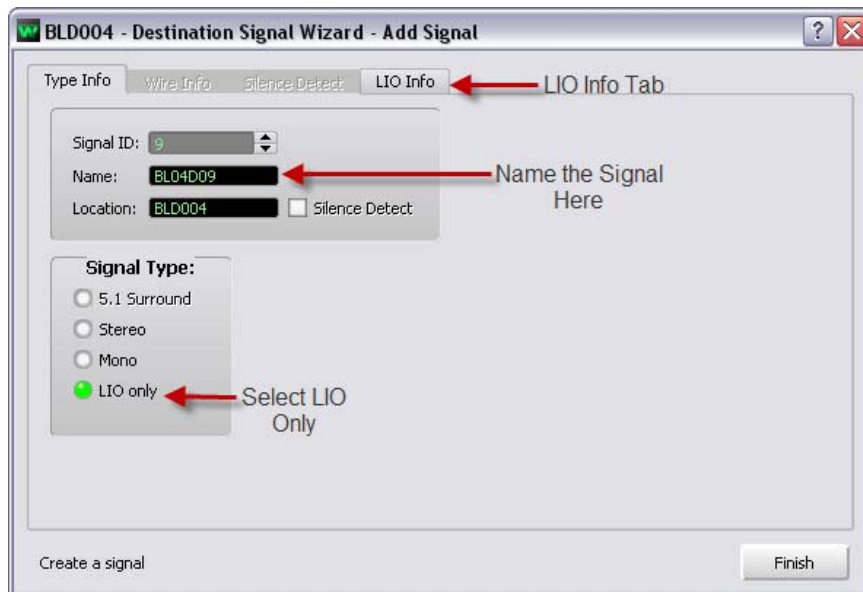
| Tally | Function |
|-------|----------------------------------|
| 1 | Enables Studio 1 in-use function |
| 2 | Enables Studio 2 in-use function |
| 3 | Enables Studio 3 in-use function |
| 4 | Enables Studio 4 in-use function |

After selecting the desired mutes and tallies, simply click the *Apply* button. You will need to repeat these steps for each additional microphone source signal. You are all done with the mute setup at this point.

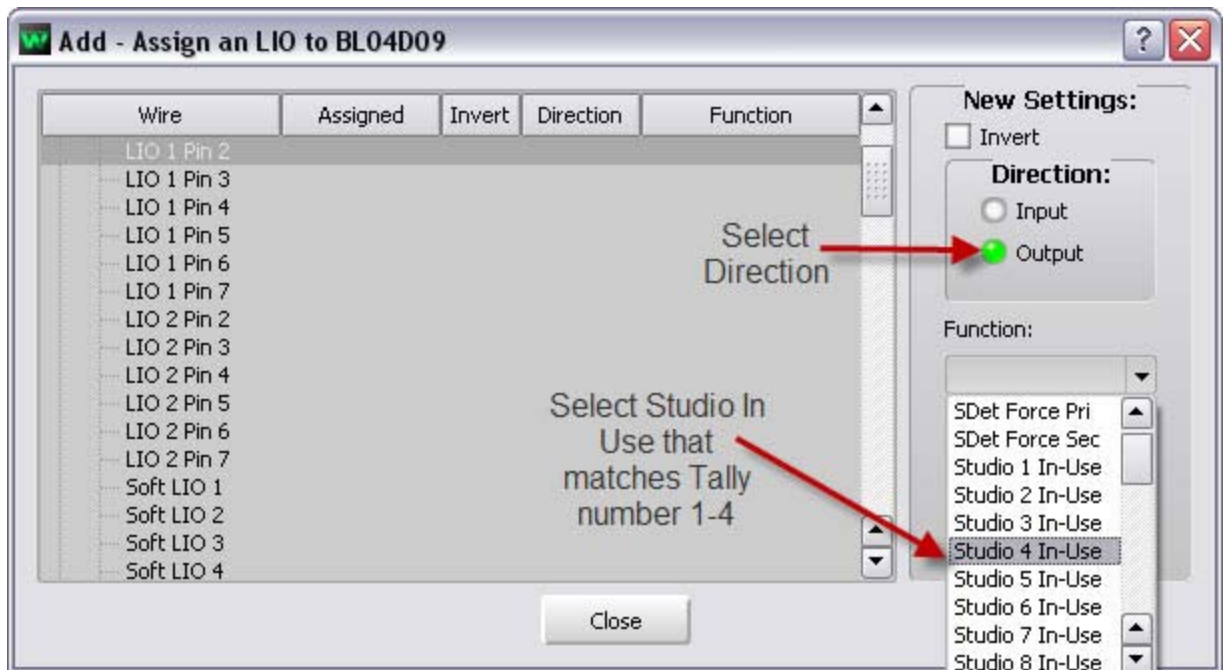
Now we need to setup the logic output port (LIO) that will active the “On Air” warning light. To do this you will need to open the WheatNet-IP Navigator GUI. Once Navigator has established a connection with the system, select a conveniently placed Blade from the System Dock to which you will wire the output port. Generally this will be a Blade located near the termination point for the warning light.



After selecting the Blade, click on the *Destinations* tab of that Blade. Here we will define a new **destination** signal. Click the *Add...* button to get started. This signal will be defined as an *LIO only* signal type. Here you can also name the new signal. Keep it simple when naming, it makes things a lot easier. When you are ready to select the LIO port, click the *LIO Info* Tab.



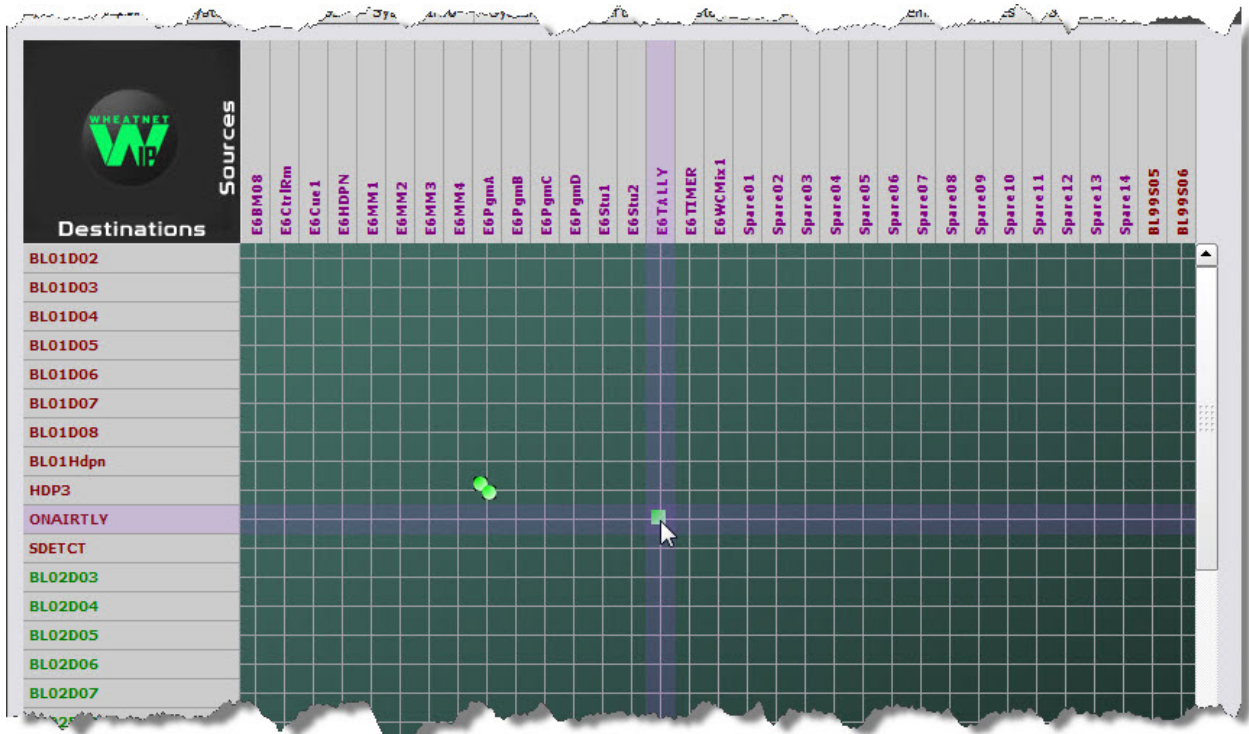
Now we are ready to select the LIO output port we are going to use. This is the physical port that will connect to your lighting control relay. Click the *Add* button on the right hand side of the screen and the LIO Assignment screen will appear.



Single-click the desired LIO pin to highlight it, then set the *Direction* for this signal as *Output* since this is the port that will be directly connected to the lighting control relay.

Next select the *Function* for this Output. It needs to match the tally chosen from the VDIP screen earlier in the setup process. You can ignore the additional *Studio x In-use* functions in the list (used for other surface families). Once you have selected the proper function from the list, press *Apply*. The newly created signal should be in the list and assigned to the designated LIO port. Click *Close* and *Finish* to complete the assignment.

Now we need to connect the surface tally source signal and the newly created destination signal. This is done on the *System Crosspoint* Tab in the Navigator GUI. Locate the Source Tally signal (E6TALLY) for the surface being configured. Then locate the new destination signal (ONAIRTLY) and cross connect the two as seen below. The connection point will appear as a square to indicate this is an *LIO only* connection.



That's it! You now have a working On Air Tally. Repeat this process for any additional control surfaces.