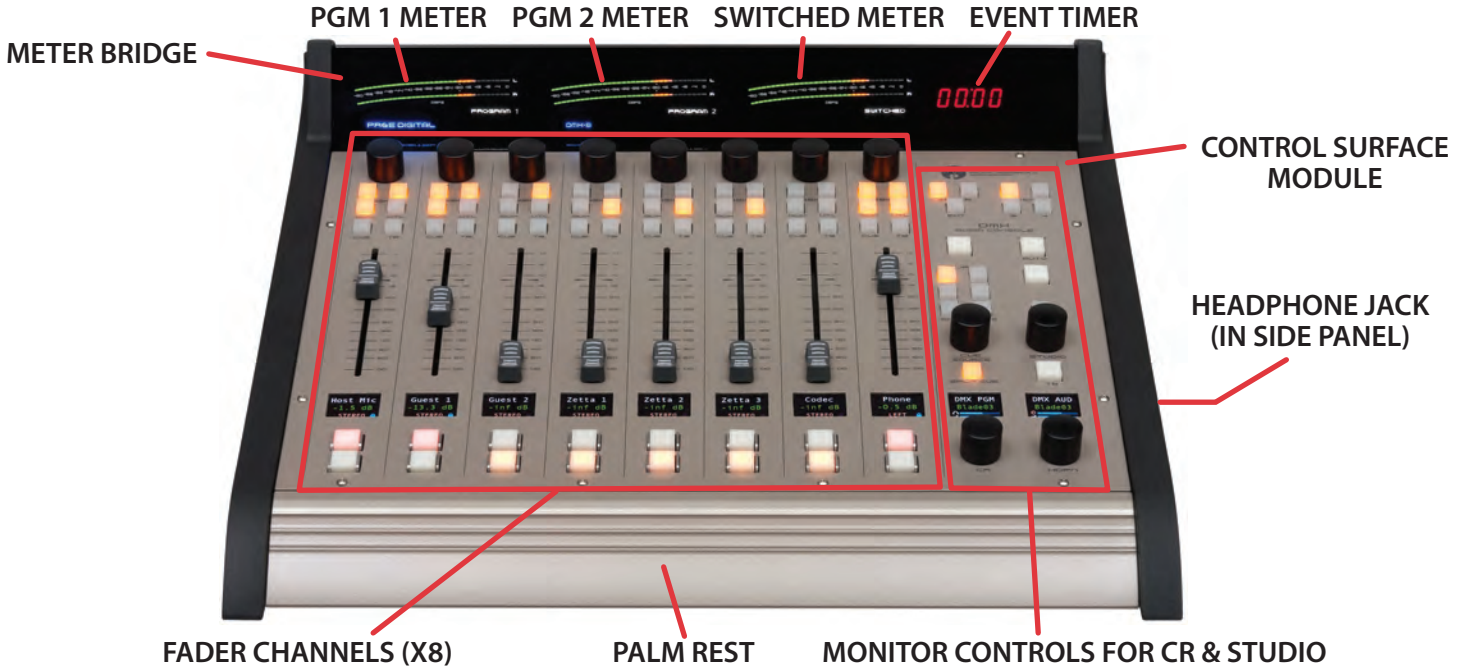
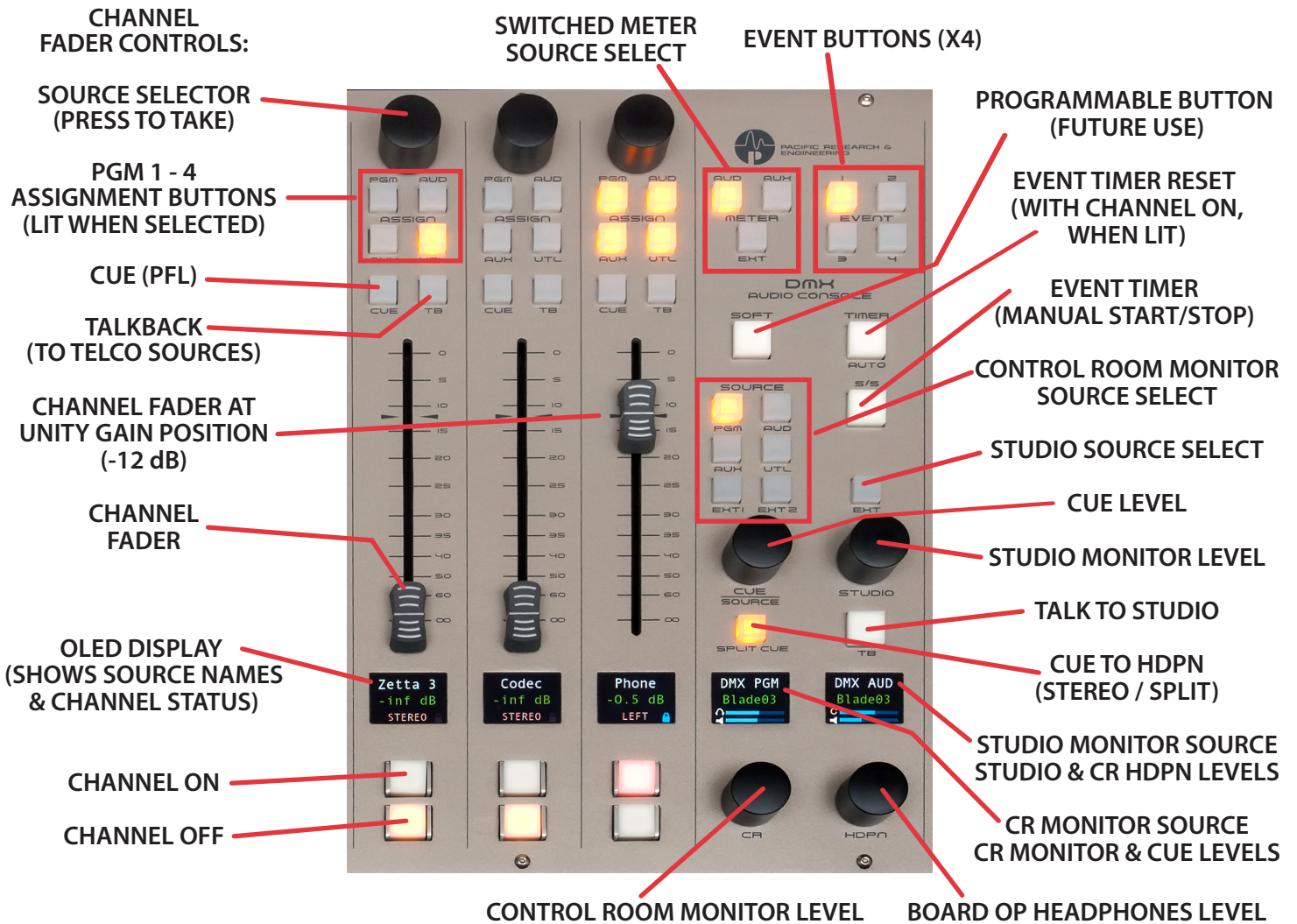


Quick Guide

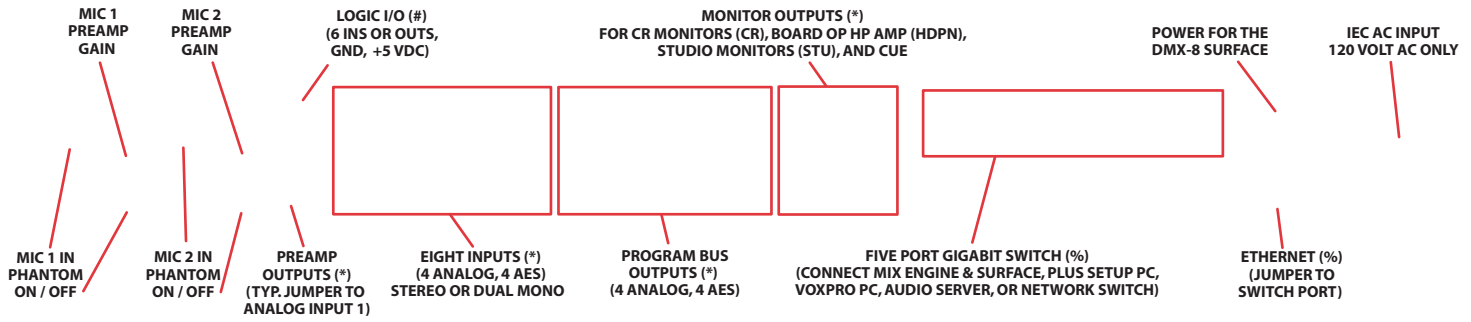
DMX-8 SURFACE PART IDENTIFICATION (DMX-16 HAS EIGHT ADDITIONAL FADER CHANNELS)



BOARD OPERATOR CONTROLS



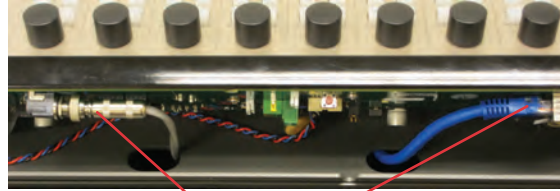
DMX-16 MIX ENGINE REAR PANEL CONNECTORS



DMX SURFACE & MIX ENGINE CONNECTIONS

Remove the upper rear cover from the Surface (three #1 Phillips screws) to access the DC power and Ethernet connectors (see photo). After positioning the Surface on your countertop, mark and drill a small cable access hole for the DC and Ethernet cables. On the DMX-8, the Mix Engine must be mounted so the supplied 16-foot DC cable can easily connect to the Surface. The DMX-16 Surface has a separate DC supply so the Mix Engine can be located up to 100 meters from the DMX-16 Surface.

On a DMX-8 fasten the DC cable from the PWR OUT jack on the Mix Engine to the power jack on the Surface. On a DMX-16, connect the DC power supply cable to the Surface DC power plug. On either Surface, connect a customer-supplied CAT6 cable from the Surface Ethernet jack to any port on the Mix Engine's Gigabit switch. Replace the rear cover panel on the Surface.



Surface DC Power & Ethernet Connections

On the Mix Engine, install a short Ethernet cable between the ETHERNET jack and any port on the Gigabit switch. Plug in the supplied IEC AC cord to the Mix Engine and connect to an isolated ground AC outlet. It will take roughly two minutes for the Mix Engine and Surface to complete their power up process.

DMX SURFACE & MIX ENGINE CONFIGURATION

The DMX ships with a USB thumb drive with three software apps (DMX Wizard, DMX Surface Setup Tool, and the PR&E Navigator). These apps are used to configure and manage your DMX consoles. The thumb drive also has a PDF of the user manual and this Quick Guide. The DMX apps can be installed on any Windows PC (XP, 7, 8, or 10; 32- or 64-bit processor). For best performance the PC needs at least 1 GB of memory and a 1.8GHz or faster processor. This "DMX admin PC" needs to have one NIC assigned to an IP address of 192.168.87.11. Connect the NIC to one of the Mix Engine's Gigabit switch ports using a straight-thru CAT6 cable (customer-supplied).

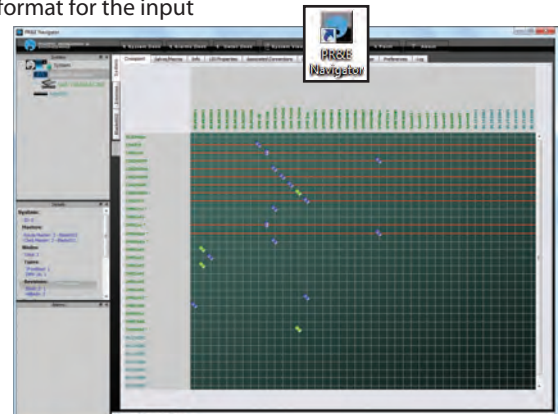
The **DMX Wizard** app is only used when multiple DMX consoles are being networked together since every DMX console ships using the same set of IP addresses: Surface = 192.168.87.201; Mix Engine blade = 192.168.87.101 (Blade ID=1); Analog Razor = 192.168.87.50; AES razor = 192.168.87.60; and A/D Razor = 192.168.87.70. The Wizard allows multiple consoles to be easily networked together by automatically changing the default IP addresses and Mix Engine IDs to be uniquely set for each device in your facility. This app would be run prior to connecting a new DMX console to an existing system. Connect the Admin PC to the engine's Gigabit switch port (along with the Mix Engine and Surface), then double-click the desktop icon to start the app. The app opens on the Window shown at the right. Click on *Build a New Studio* to start the Wizard.

The **DMX Surface Setup** app configures the Mix Engine and Surface. It's used to name and set the format for the input signals; to set the visibility of the inputs on each fader channel; to assign the six logic connections on the Mix Engine; to set the various channel attributes; along with a host of other settings by selecting one of the *five vertical tabs*.

The **PR&E Navigator** is a licensed app for DMX system management. It also allows one to route signals by clicking in an X-Y grid; to create and take salvos to allow many system routing functions to be done simultaneously; to manage the system through a built-in syslogger; along with many other system control functions.



DMX Surface Setup Icon & VDips Tab



PR&E Navigator Icon & X-Y Grid Screen

CONNECTOR WIRING

* **STUDIOHUB+ WIRING**

| RJ45 PIN (WIRE) | SIGNAL |
|-----------------|-----------------|
| 1 (WHT/ORG) | Left + or AES + |
| 2 (ORG) | Left - or AES - |
| 3 (WHT/GRN) | Right + |
| 6 (GRN) | Right - |
| 4 (BLU) | GND |
| 5,7,8 | No Connection |

WNIP LOGIC WIRING

| RJ45 PIN (WIRE) | SIGNAL |
|-----------------|----------|
| 1 (WHT/ORG) | GND |
| 2 (ORG) | Logic 1 |
| 3 (WHT/GRN) | Logic 2 |
| 4 (BLU) | Logic 3 |
| 5 (WHT/BLU) | Logic 4 |
| 6 (GRN) | Logic 5 |
| 7 (WHT/BRN) | Logic 6 |
| 8 (BRN) | +5 Volts |

% **ETHERNET WIRING**

| RJ45 PIN (WIRE) | SIGNAL |
|-----------------|-----------|
| 1 (WHT/GRN) | TRANSMIT+ |
| 2 (GRN) | TRANSMIT- |
| 3 (WHT/ORG) | RECEIVE+ |
| 4 (BLU) | N/C |
| 5 (WHT/BLU) | N/C |
| 6 (ORG) | RECEIVE- |
| 7 (WHT/BRN) | N/C |
| 8 (BRN) | N/C |



DMX Studio Wizard Icon & App