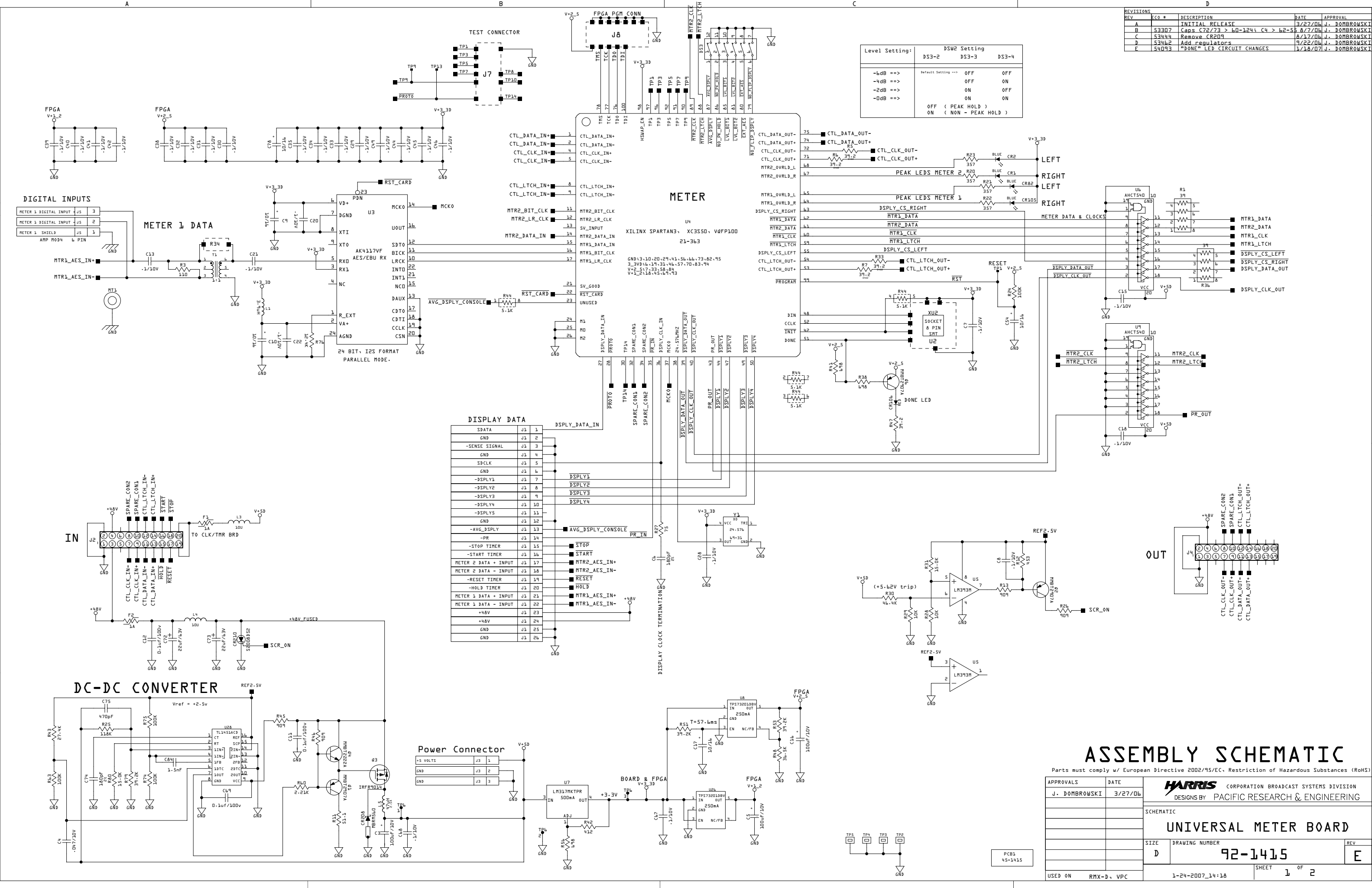


REV	ECO #	DESCRIPTION	DATE	APPROVAL
A	53307	INITIAL RELEASE	3/27/06	J. DOMBROWSKI
B	53307	Caps. C22/T23 > 60-124; C4 > 62-55	8/7/06	J. DOMBROWSKI
C	53444	Remove CR209	8/17/06	J. DOMBROWSKI
D	53462	Add regulators	9/22/06	J. DOMBROWSKI
E	54093	"DONE" LED CIRCUIT CHANGES	1/16/07	J. DOMBROWSKI

Level Setting:	DSMR Setting		
	DS3-2	DS3-3	DS3-4
-LdB ==>	Default Setting ==>	OFF	OFF
-4dB ==>		OFF	ON
-2dB ==>		ON	OFF
-0dB ==>		ON	ON
		OFF (PEAK HOLD)	ON (NON - PEAK HOLD)



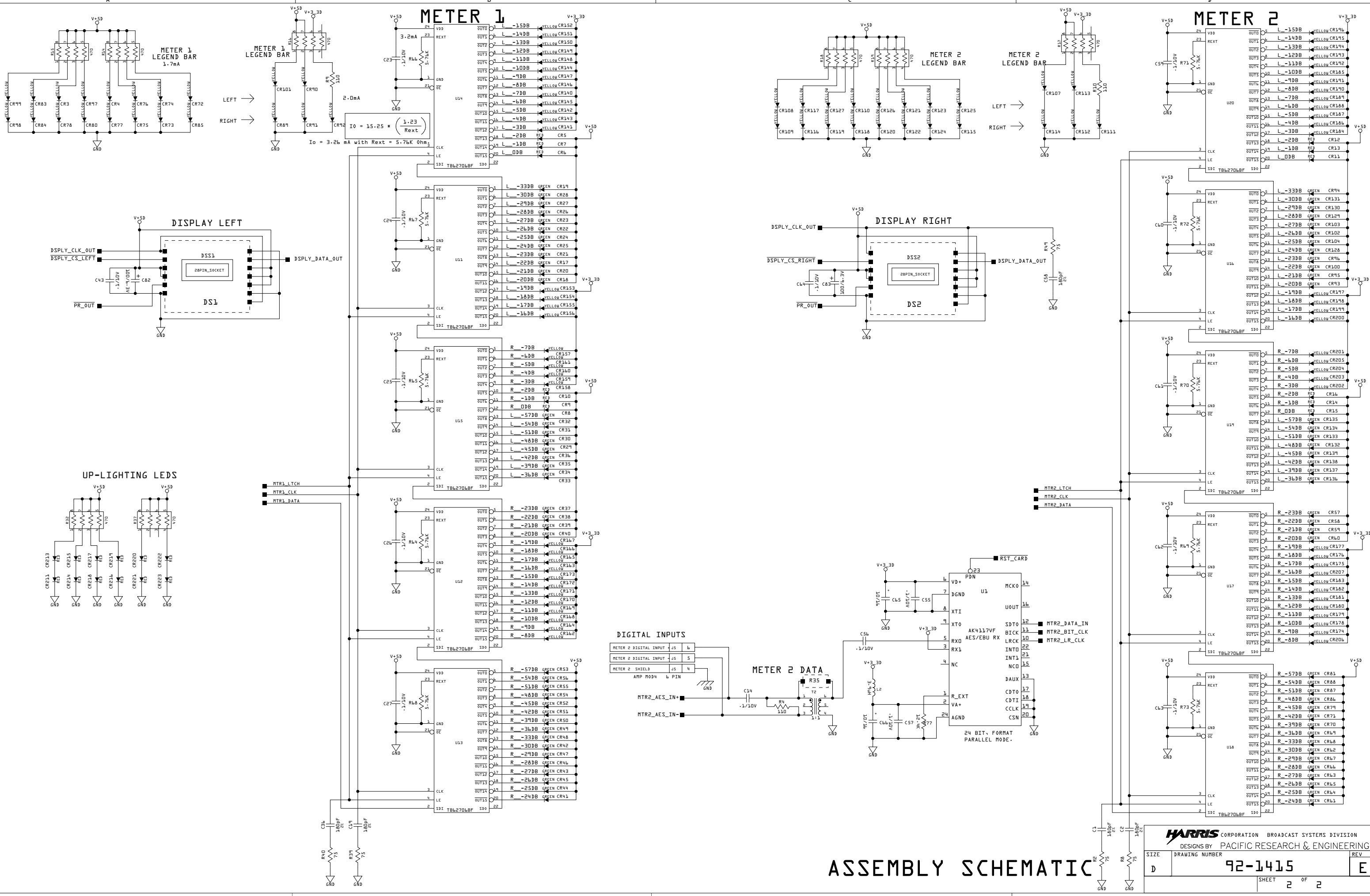
Signal	Pin
SDATA	J1 1
GND	J1 2
-SENSE SIGNAL	J1 3
GND	J1 4
SPCLK	J1 5
GND	J1 6
-DSPLY1	J1 7
-DSPLY2	J1 8
-DSPLY3	J1 9
-DSPLY4	J1 10
GND	J1 11
-AVG_DSPLY	J1 12
-PR	J1 13
-STOP TIMER	J1 14
-START TIMER	J1 15
METER 2 DATA + INPUT	J1 17
METER 2 DATA - INPUT	J1 18
-RESET TIMER	J1 19
-HOLD TIMER	J1 20
METER 1 DATA + INPUT	J1 21
METER 1 DATA - INPUT	J1 22
+48V	J1 23
+48V	J1 24
GND	J1 25
GND	J1 26

ASSEMBLY SCHEMATIC

Parts must comply w/ European Directive 2002/95/EC, Restriction of Hazardous Substances (RoHS)

APPROVALS	DATE	HARRIS CORPORATION BROADCAST SYSTEMS DIVISION	
J. DOMBROWSKI	3/27/06	DESIGNS BY PACIFIC RESEARCH & ENGINEERING	
SCHEMATIC			
UNIVERSAL METER BOARD			
SIZE	DRAWING NUMBER	REV	
D	92-1415	E	
USED ON	RMX-D, VPC	SHEET	1 OF 2
		1-24-2007_14:16	

PCB15
45-1415



ASSEMBLY SCHEMATIC